

Mary Rieke Elementary School

Parent/Student Handbook and Calendar



2017-2018

Character counts at Rieke!

Trustworthiness: To act in a manner that makes one worthy of confidence

Truthfulness: To act with personal responsibility and mental accountability

Active Listening: To listen with attention and intention

No Put-Downs: To never use words, actions and/or body language that degrade, humiliate, or dishonor others

Personal Best: To do one's best given the circumstances and available resources

Rieke students will practice these lifelong guidelines to ensure that each student's attitude and emotional state are ready for optimum learning.

These Guidelines provide consistent boundaries and expectations for one's behavior and performance.

Looks like:

accountability, caring, cheerfulness, citizenship, cleanliness, common sense, communication, conservation, cooperation, courage, curiosity, dependability, effort, fairness, flexibility, forgiveness, friendship, gratitude, health, honesty, initiative, integrity, kindness, leadership, loyalty, orderliness, organization, patience, perseverance, pride, problem solving, purpose, resourcefulness, respectful, responsibility, safety, self-control, self-reliance, sense of humor

From: *Tools for Citizenship and Life: Using the ITI Lifelong Guidelines and Life Skills in your Classroom* by Sue Pearson.

Copyright 2000 Susan Kovalik and Associates, Inc.

LETTER FROM THE PRINCIPAL

Dear Rieke Families,

Welcome to the 2017-2018 school year! The school is shiny clean thanks to our hard working custodial crew and staff are ready to begin a positive and successful year for our students. Our partnership with families is one of the strengths of this school community and the purpose of this handbook is to help you be informed so you can play an active role in the support of your student. Because the format is to primarily be an on-line tool there may be updates to this handbook and particularly to the calendar throughout the year.

This Handbook/Calendar offers helpful information about Rieke School. Essential dates and phone numbers are also listed. As the school year continues, please visit our website at <http://www.pps.net/schools/riek> for current updates.

The staff at Rieke is committed to assisting all students in reaching their full potential within a joyful, stimulating learning environment. We challenge students and, at the same time, provide a school atmosphere that makes cooperation and teamwork essential to the learning process. Our goals are best met in a setting of high academic and behavioral expectations, where each child is known as an individual and the focus is on strengths and excellence. We believe each child deserves encouragement, support and a sense of well-being. We want all Rieke students and their families to feel welcome, and for students to develop and maintain a lifetime love of learning and fulfill their potential as competent citizens and caring people.

Volunteers are an important part of school life here at Rieke. Please contact your child's teacher or the PTA volunteer coordinator if you have time to contribute. The energy and enthusiasm generously donated by our many volunteers is a tremendous advantage for our students. All volunteers must submit a Criminal Background check. Click this link <https://apps.pps.net/volunteermanagement/> to complete the on-line form. It is good for two years and you may check with office staff if you're not sure when your current check expires.

The PTA newsletter, the "*Rieke Rapper*" is sent out electronically weekly as well as posted on our website. I also send out a Principal's message each week. Please get into the habit of reading these regularly. We rely on it to communicate important and timely information to you. If you have unanswered questions, or a concern, please give us a call or email. We want to hear from you!

I'm excited about the year ahead!

Sincerely,

Sarah Lewins, Principal

SCHOOL STAFF

Sarah Lewins..... Principal slewins@pps.net
 Zachary Prichard..... Principal's Secretary zprichard@pps.net
 Lynda Gordon..... School Secretary lgordon@pps.net

Grade Level	Name	Room #	Ext	email
Kindergarten	Julianne Reddekopp	7	76307	jreddeko@pps.net
Kindergarten	Laura Nelsen	8	76308	lnelsen@pps.net
Kindergarten	Michelle Spohn	6	76306	mspohn@pps.net
1	Alicia Baker	1	76301	abaker1@pps.net
1	Julie Smith	12	76312	jsmith2@pps.net
1	Eric Swehla	11	76311	eswehla@pps.net
2	Jill Rebholz	10	76310	jrebholz@pps.net
2	Brad Waters	2	76302	bwaters@pps.net
2	Michael Plein	14	76314	mplein@pps.net
3	Maia Allen	3	76303	mallen2@pps.net
3	Kyla Walker	21	76321	kwalker@pps.net
3	Kerrie Waymire	4	76304	kwaymire@pps.net
4	Sandy Donnelly	19	76319	sdonnelly@pps.net
4	Jeff Sturges	22	76322	jsturges@pps.net
4	Linda Austin	17	76317	laustin@pps.net
5	Betsy Early	20	76320	early@pps.net
5	Sean Pollock	18	76318	spollock@pps.net
Art	Jill Mitchell	15	76315	jmitchell@pps.net
Cafeteria	Daureen Morris	Cafeteria	76335	dmorris@pps.net
Counselor	Ian Johnstone	Nurse room	76334	ijohnstone@pps.net
Custodian	Maribel Vidal Ambrosio	boiler room	76336	mvidalam@pps.net
Educational Assistant	Beth Nelson			bnelson@pps.net
ESL	Betty Carter-Widyaratne	5	76305	brcw@pps.net
Learning Center	Janet Stearns-Gannett	5	76305	jstearns@pps.net
Library Assistant	Jayne Smith	Library	76309	jsmith@pps.net
Media Specialist	Amy Vaughan	library	76309	avaughan@pps.net
Nurse		nurse room	76334	
Occupational Therapist	Debbie Angle	5		dangle@pps.net
Para Educator	Brenda Jamsgard	5		bjamsgard@pps.net
Para Educator		5		
Para Educator	April Sadler-Nieman	5		asadlernieman@pps.net
PE	Valoree Lancaster	Gym	76324	vlancaster@pps.net
School Psychologist	Melissa Kirkpatrick	5	76333	mkirkpatrick@pps.net
Speech/Language Pathologist	Radha Szenasy	5	76337	rszenasy@pps.net
Technology support	Jani Colasurdo	tech lab	76338	jcolasur@pps.net

GENERAL INFORMATION

School Hours

Grades	Opening	Tardy	Dismissal
Grades K,1,2,3,4,5	8:35 a.m.	8:45 a.m.	3:00 p.m.

School begins promptly at 8:45 a.m. Please have your child in the classroom and ready to learn by that time.

Students and parents are asked to wait outside until the doors are opened. During inclement weather, they may wait in the front hallway. Please do not leave children unattended before and after school hours because there is no supervision. We appreciate your cooperation to provide a safe environment for our students. Parents who need to take their child from school during school hours must check them out through the school office. This procedure is to ensure the safety of students.

Student Absences

If your child is not going to be at school call the school office and report the absence and the reason for the absence before 9 am. This is the only way that we can insure we get the correct information in a timely way and help you avoid the stress and anxiety of the auto-dialer calling and tell you your child is not in school. You can call the office anytime to report an absence at 503-916-5768 or email riekeattend@pps.net.

Parking Lot Safety

For the safety of our children and the entire Rieke Community, please follow these parking lot guidelines:

- Plan-ahead for drop off and pick up. Use all marked parking spaces available in the parking lot.
- If you are parked facing Wilson, please walk your student to the Rieke-side sidewalk.
- No student should cross the parking lot un-chaperoned.
- Drop off or pick up should not occur in the driveway.
- Do not block the driveway or turn around circle.
- White stripes and No Parking signs mean just that, all hours, all days.
- Please use cross walks
- Please shut off your engine and DO NOT idle while waiting at pick-up.

School Visitations

Parents are welcome to visit our school! It is important that you sign in at the office upon arrival so that we know you are in the building. We appreciate your cooperation with this request.

GENERAL INFORMATION

Bus Schedules & Information

Most neighborhood students living more than one mile from Rieke qualify for bus transportation. Prior to the start of the school year, the PPS Transportation Department makes an effort to connect with families who qualify for services. This may include a mailing or a visit by a bus driver. PPS sets the bus routes for our school. If your address does not fall in a safe pick-up location, you may request that a stop be added to a route. Please contact the Transportation office with any questions at 503-916-6901. 2016-17 bus schedules are available in the school office and are online at the Transportation website.

In the morning, bus riders are met at the curb by a Rieke staff member. Similarly, students in grades K-2 are escorted to the bus at the end of the day and students in grades 3-5 are released from class to the bus. A Rieke staff member is at the curb monitoring the riders. Students in grades K-2 must have a visible bus tag for the entire school year. Students in grades 3-5 must use a bus tag for the first 8 weeks of school. This assists drivers in delivering students to the appropriate destination.

School Meals

Portland Public Schools provides students healthy and balanced meals at the following prices:

Breakfast:	Full Price - \$1.50	Adult	\$2.25	Breakfast is available beginning at 8:35
Lunch (includes milk):	Full Price - \$2.80	Adult	\$4.30	
Milk only:	50¢			

Rieke participates in a computerized lunch ticket system. Families pay for lunches in advance and children withdraw from their account whenever they buy breakfast, lunch, or a milk. You can set up an account through a service provided by PPS Nutrition Services called <http://www.mylunchmoney.com/> where you can monitor usage and add money online. You will need your student's student identification number, please call the office and we will provide this to you. If you prefer, you can leave a clearly identified check or cash for your child's meals in the **cafeteria mailbox in the school office**. Please make every effort to keep your child's account current.

Students may qualify for free or reduced priced meals depending on parent's income or status (Food Stamps or Aid to Dependent Children recipients, Foster Child Care provider, etc.). We urge you to complete a meal application form if you think you may qualify for free or reduced price meals. Please call Nutrition Services hot line at 916- 2000, Ext. 3399, or visit www.pps.k12.or.us/departments/nutrition for additional information.

Field Trips

A permission slip will be sent home for each school sponsored field trip. We must have a signed permission slip by a parent/ guardian to allow a child to leave school. We cannot accept handwritten notes or phone calls in place of the field trip form.

GENERAL INFORMATION

Inclement Weather

There are three possibilities due to bad weather. First, schools can be closed. Second, schools can be on a two-hour late opening. On late opening days, school begins at 10:45 a.m. for students. Please do not send your children to school before this time. Thirdly, early dismissal may be called. It is imperative that your child knows what to do in case of an early dismissal and that emergency record are kept current.

You may access current information regarding schedule changes on the Portland Public Schools website: www.pps.k12.or.us.

The following radio/TV stations also carry PPS schedule change information:

- FM - KBPS 89.9; KGON 92.3; KXL 95.5; KISN 97.1; KUPL 98.5; KWJJ 99.5; KKRZ 100.3; KINK 101.9; KKCW 103.3; KXYQ 105.1; KMJK 106.7
- AM - KGW 620; KXL 750; KWJJ 1080; KEX 1190; KUPL 1330; KBPS 1450; KMJK 1550; KFX 1520
- TV - KATU TV - Channel 2; KOIN TV - Channel 6; KGW TV - Channel 8

We ask that you please avoid calling the school during inclement weather so that our phone lines are free to receive closure information.

Contacting Your Child's Teacher

You may contact your student's teacher by either emailing them (listed below) or calling the school office directly and using the voice mail system to leave a message. The office number is 503-916-5768. However, if you are trying to notify a teacher about a student's change of plans for afterschool, we ask that you contact the school office directly as many teachers do not get a chance to check voice mail until after school.

Use of Telephone

The school telephone is a business telephone for the school. Except in cases of emergency, we hesitate to call students or teachers from the classroom to talk on the telephone. The office will be glad to relay important messages. However, we ask that parents avoid calling the school on a regular basis to communicate messages regarding babysitting or supervision changes unless an emergency exists. Students will only be allowed to use the phone for urgent calls. If necessary, these messages should reach the office by 2:30 p.m., well before our 3:00 p.m. dismissal time. Thanks!

Child Care

Vermont Hills Family Life Center (503-452-8633) provides before and after school care. Vermont Hills is on-site at Rieke. After school transportation to Portland Jewish Academy (503-452-3431) childcare is also offered through the Middleman Jewish Community Center.

GENERAL INFORMATION

Homework Policy and Expectations

Homework holds a definite and meaningful place in the educational program. Homework is an extension of classroom work and reinforces the concept that education is a full-day and life-long process.

- Homework reinforces school learning experiences.
- Homework can help develop independent work habits, encourage study skills, and provide opportunities for creativity.
- Homework assignments can serve as a means of providing a bond of between parent, child, and teacher.



responsibility, refine

common effort

Out-of-class tasks that a student is assigned as an extension of classroom work complexity and length with the student's maturity. Homework assignments should be varied to account for individual interests, abilities, and learning styles of the students.

- Practice assignments provide opportunities to apply recent learning or to reinforce newly acquired skills.
- Preparatory homework furnishes background information for the following day's class activities.
- Extension assignments encourage individualized and imaginative pursuits of knowledge.

Notes:

- Some teachers give weekly homework packets which allow families flexibility in scheduling homework.
- Individual modifications/accommodations may be made for students as appropriate.
- Classroom teachers develop their own policies for late assignments. For excused absences, the general rule is one day make up for each day missed. For extenuating circumstances, please work with the classroom teacher to develop a plan.

How Can Parents Help?

- Provide time each day to work with your child, talk about school, and give assistance as needed.
- Provide a home study environment that is well lit, quiet and comfortable. Keep study materials nearby. Some children study better with soft music or background noise, so try to accommodate your child's preferred learning style.
- Make sure your child is well rested and fed and has had time to wind down after school. Also, avoid scheduling homework right before bedtime when children may be too tired to do their best.

- Avoid doing the homework yourself. Doing homework for you child sends the message that he or she is incapable of doing the work and that perfection is the main objective. Doing homework should help children plan, manage, and complete work by their selves.
- Help your children learn to be responsible for remembering their assignments, completing their work, and returning their materials to school on time.
- Contact the teacher if you have questions about an assignment or the homework expectations.

GENERAL INFORMATION

Personal Property

Students are encouraged not to bring personal property to school. It may be lost or stolen. Toys, dolls, headsets, etc., should remain at home.

In the interest of safety, skateboards, scooters, and rollerblades are not allowed at school. Any items which could be mistaken or used as weapons, including guns or toy guns, bullet shells or knives will be confiscated and may be reported to the police. There is a strict no weapons policy in Portland Public Schools. Students will be suspended if they are found with a knife in their possession, including Swiss Army Knives and other small pocketknives.

Lost and Found

A large quantity of jackets, sweaters and other items accumulate at school. If these items are labeled, they have a good chance of being returned. Lost and found articles are kept in a closet in the hall by the gym. All items will be periodically displayed for students; parents are invited to check lost and found articles Also.

Label All Outerwear Clothing

Please put your child's name on all clothing and check the lost and found as soon as possible when something is missing. Periodically, lost and found is displayed on tables in the front hall to give parents a chance to recover lost items. If a name is on the item, we'll make-an-effort to get it back to your child. If not marked or claimed, they are washed and sent to the Portland Public School Clothing Closet for those in need.

IMPORTANT DATES AND ACTIVITIES

September Family Picnic

A truly unique Rieke tradition! The entire school community gathers on our playground to celebrate the start of school. PTA sponsors this fun event. This year it will be on Thursday, September 14, 6:30-8p.m.

Grading Periods

1st Quarter..... August 30, 2017 - November 2, 2017

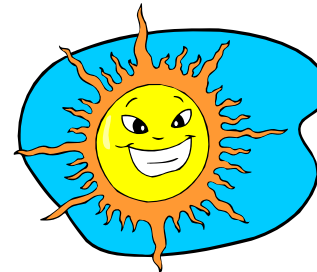
2nd Quarter..... November 6, 2017- January 26, 2018

3rd Quarter January 30, 2018 - April 12, 2018

4thQuarter..... April 16, 2018 - June 8, 2018

Parent/Teacher Conferences

Parent/Teacher Conferences will be held on Wednesday, November 8 and Thursday no school on these two days as well as no school on Friday, November 10 due to the Please plan to attend your child's conference so that the home-school partnership is strengthened. This is an extremely helpful interaction that assists teachers in getting to know their students.



November 9. There will be Veteran's Day Holiday.

Note there will be no school on Wednesday November 22nd to compensate staff for the two evenings of conferences.

Celebrating special friends

Rieke students are encouraged to invite their special friend, including grandparents or other adults in their lives, to attend the event hosted in each classroom to see students showcase their work. Each teacher will advertise these events well ahead of time during the school year. Events will also be announced in the *Rapper* newsletter.

Run for Rieke

Each spring students and staff participate in an all-school spring jog-a-thon. The Run for Rieke" raises funds to be used to advance school experiences at Rieke, as well as to provide enriching experiences in visual and performing arts, dance, sculpture and performance. The race will be held Monday, April, 23rd 1:30-2:30 on the Wilson HS track.

State Assessment

Smarter Balance is one of two multi-state assessments designed to align with the Common Core State Standards adopted nationwide. These tests in math, English language arts, and science help determine how well, students are progressing towards those standards. The tests also help

evaluate the success of instructional programs. Smarter Balance is an annual test for students in grades 3-5 and takes place during April and May at Rieke.

HEALTH AND WELLNESS INFORMATION

Accident and Illness

Only first aid care may be given at school. In case of serious accident or illness, we will:

1. Contact parent(s) or legal guardian,
2. Contact the given emergency number(s),
3. Contact Emergency Medical Response (911).

Please let us know as soon as possible if there is any change in your home, work, or emergency numbers. It is important that the school has accurate records for illnesses and emergencies.

Contagious Conditions

To decrease the spread of contagious conditions in schools:

- Tell the school if your child has a contagious disease such as chicken pox or pertussis (whooping cough)
- Do not send your child to school with a rash, fever, diarrhea, or vomiting. When returning to school from these conditions, students **MUST BE 24-hours fever free with no medication and 24 hours diarrhea and vomit free.**
- To protect the health of students or other persons, certain diseases are reportable to the health department per law (OAR 333-18-000). At such times records and information may be disclosed to public health officials.

Medication Administration at School

The school's nurse provides consultation about medication administration that must occur at school. **Only medication that is necessary to be given during the school day will be kept at school.** Please ask your medical provider if your child's medication can be given outside of school hours. This is safer for your child and easier for you. By Oregon law, if medication must be given at school you must:

- Provide written permission (**forms available at school**). Any changes to the medication will require the parent/guardian to update the medication form at the time of the change.
- Make sure all medication (prescription and over the counter) is in its original container and marked with the student's name. Ask the pharmacist for an extra bottle for school when getting prescriptions.
- **All medication must be delivered to school by the parent/guardian or responsible adult designated by the parent or guardian.** Students may not keep medications with them unless they are age-appropriate for the responsibility, have been identified as a self-manager, have written parent permission, and are cleared by the principal to do so.
- Make sure the school has an adequate supply of all medications required by your child.

- Pick up the medication when it is no longer needed at school. **All medication not picked up by the end of the year will be destroyed.**

To provide for your child's special medical or mental health needs, for example diabetes, seizures or school anxiety, it is **important to promptly tell the school.**

Rieke School Wellness Policy

The 2011 Wellness Committee wrote the following Wellness Policy for Rieke Elementary school in accordance with the PPS Wellness Policy 3.60.060 in order to promote and protect children's health, wellness and ability to learn by supporting behaviors that include healthy eating and physical activity.

Policy regarding the use of food in the classroom:

Birthday Celebrations:

Birthday celebrations will not include food. Student's birthdays can be recognized by non-edible rewards such as stickers or through the sharing of stories, songs, dance or other activities deemed appropriate by the classroom teacher. Birthday party invitations are not to be handed out at school.

Other Classroom Celebrations: (Harvest/Halloween, Valentine's, End of the Year parties, etc): Food can be part of these celebrations but healthy alternatives to traditional sweets, such as fruits, yogurt, or cheese and crackers should be served.

Policy regarding physical activity:

Students shall not be regularly denied participation in recess or PE as a form of discipline or for classroom make-up time.

Safety Patrol

Safety Patrols will be on duty at the following times: 8:35 to 8:45 a.m. and 3:00 to 3:05 p.m. The fifth graders who serve on the patrol are selected for their responsible behavior and trustworthiness. They are required to follow the rules to remain on the patrol.

RESOURCES

Building Screening Committee (BSC)

The Building Screening Committee is assembled when a teacher or parent has an academic or behavioral concern about their student. The BSC is made up of school staff and the parent. The BSC collects information about the student and meets to discuss strategies and develop a plan to support the student. For example, if the issue is behavior, the BSC may ask for data and suggest ways to lower student/teacher frustration or change surroundings. For an academic concern, the team may brainstorm ideas for changing instruction methods, adapting curriculum, or changing the environment. All interventions are designed to help the student progress in the general education curriculum. If the interventions

are successful, the plan continues. If the interventions and adjustments are not enough to support the student, the BSC will refer the student to the Evaluation Team. The Evaluation Team will determine whether to pursue a Special Education evaluation or refer to other sources. The parent is informed and involved throughout the screening meetings and the assessment process.

School Psychologist

The school psychologist functions as the school's primary link with the district special education services. She serves as a member of the Building Evaluation Screening Committee that meets regularly to determine plans of action for students with educational needs. This specialist is a member of the Special Education team.

Learning Center (LC)

Students who qualify for special education services in reading, social emotional skills, writing, and/or math, are eligible to receive services from the LC staff. Supplemental instruction is provided to students, which is coordinated with homeroom teachers and with other support programs. The Learning Center teacher is a member of the Special Education Team.

Speech and Language

Speech and language supports are provided to students who qualify for communication services such as articulation, fluency, voice or language difficulties. The speech/language pathologist diagnoses and provides intervention for those students who are eligible for service based on Oregon State eligibility criteria. This specialist is a member of the Special Education Team.

SPECIAL CLASSES

Opportunities for creative expression knowledge in the arts are integral to instruction at Rieke. As the arts are integrated and infused into our curriculum, students are given experiences which build skills and appreciation for a variety of art forms. Assemblies and artist residencies enhance the classroom experience. This year all students will be participating in an Arts Residency through the Right Brain program. For more information on Right Brain, visit <http://therightbraininitiative.org/>. Our half time art teacher will be providing art instruction to all students throughout the year.

PE programs emphasize fitness and developmental skills in addition to various sport and movement activities. Self-confidence is enhanced by goal setting and the progress made toward reaching these goals. We currently have a full time PE specialist who will provide both dance/movement classes as well as the traditional PE classes.

Media Center

The Rieke Media Center provides rich experiences for students as they locate, evaluate and synthesize information from print and electronic resources. Our half time Teacher Librarian provides direct instruction in literacy support and our half time Media Assistant provides support to students and teachers in the selection of literature to inspire and extend classroom instruction.

RESOURCES

Technology

In our computer lab students receive whole group instruction in technology tools integrated into core content to enhance and extend learning. Students have access to classroom computers as well. Our technology support instructor assists teachers and students in their lab experiences.

Talented and Gifted Program (TAG)

The Rieke School TAG Plan provides a wealth of information on instruction and services for TAG students. It is available on the TAG bulletin board in our main hallway, and individual copies are available on request. Your child's teacher is primarily responsible for the development, implementation, and assessment of TAG services. If you have questions or would like additional information, please contact your child's teacher, our TAG Coordinator Julie Smith and/or the principal.

Volunteers in Portland Schools

Volunteers contribute in many important ways at Rieke, such as coordinating family activities and events. They assist the school's staff by relieving them of many non-teaching tasks. Instructional support is also enhanced by volunteers providing additional assistance in the classroom. Volunteers play a vital role in the education of our students. We thank them for the many hours donated to our program. Contact the Rieke Volunteer Coordinator, to discover how you can help!

All volunteers need to sign-in when first entering the school. A special computer is kept in the office for this purpose. Remember to sign-in and wear your VOLUNTEER BADGE. If you have any questions, or need help, see our School Secretary.

DISTRICT RESOURCES

Before and After School Options

Vermont Hills Family Life Center..... 503-452-8633
Portland Jewish Academy Child Care..... 503-452-3431

Portland Public Schools

Wilson Cluster Schools Office 503-916-3051
Blanchard Education Service Center 503-916-2000
Robert Gray Middle School 503-916-5676
Wilson High School..... 503-916-5280
PTA Clothes Closet.....503-916-5840 ext. 266
Student Transportation 503-916-6901



COMMITTEES AND ORGANIZATIONS

Mary Rieke Parent Teacher Association (PTA)



The Rieke PTA is a chapter of the Oregon Parent Teacher Association, and we are here to help you and your child have the best experience possible at Rieke!

Active involvement in your child's educational experience is one of the most important things you can provide to help your child succeed in school, both academically and socially. The mission of the Rieke PTA is to promote parent involvement in our children's educational experiences, assist parents in developing the skills they need to raise and protect their children, and to support and advocate on behalf of our children. Our amazing PTA members help plan, fund and run educational activities and programs, volunteer in the school, and advocate within our community. We create opportunities which help foster our children's growth and development through elementary school.

Some of the diverse and important range of programs developed and/or funded by the Rieke PTA include: funding Technology Instruction; provision of a library book budget; provision of cash grants for teachers; assistance for children and families in need; publication of the Student Directory; dissemination of important announcements and information via email and the school newsletter (The Rapper); Chess Club; organization and planning for the Back to School Picnic, Teacher Appreciation Day, the Science Fair, and the end-of-year Carnival, along with many other activities. These functions all enhance our children's experience at Rieke, and add to the richness of our community.

Mary Rieke Parent Teacher Association (PTA) Membership

How can you be a part of this community? It's simple. Join the Rieke PTA! Fill out the membership form provided in your Welcome Packet, or contact our Membership Coordinator, Amy Frewing, amyfrewing@oregontransfer.com. Come to our monthly meetings every 3rd Tuesday of the month (Except November and December) if you can! Everyone is welcome. The most important thing is to be involved in whatever way you can. We know life can be complicated, and many of us are busy. That's why we offer the opportunity to participate in a variety of ways. Hopefully one of them will work for you. We look forward to meeting you, have a great year!

Questions? Please contact us any of us:

2017-2018 PTA Board Members:

President -	Brian Unflat	brian@unflat.com
Vice President -	Holly Ingram	hollylynngram@gmail.com
Secretary -	Kes Wold	kes@woldconsulting.com
Treasurer -	Mike Kale	mkale@me.com
Fundraising Chair -	Melissa Light	lightfamily.or@gmail.com
Membership Coordinator -	Amy Frewing	amyfrewing@oregontransfer.com
Events Coordinator -	Amanda Brohman	amandabrohman@gmail.com
Foundation Liaison -	Dana Grigsby	dana@userfirstweb.com

COMMITTEES AND ORGANIZATIONS

Leadership Council

In compliance with the Oregon Educational Act for the 21st Century, the purpose of the school Leadership Council is to promote, increase and monitor student achievement. The duties of the council include developing a School Improvement Plan, which includes instructional initiatives and plans to support the professional growth of the school's staff. Council activities also include the development and coordination of the implementation of the education act at our school and fostering family involvement in the school.

Rieke's Leadership Council is composed of three teachers, three parents, and the principal. Meetings are monthly, please check the school website to see scheduled times. You are welcome to attend.

Leadership Council Members

Amy Frewing (Parent).....	amyfrewing@oregontransport.com
Open (Parent)	
Open (Parent)	
Jill Rebholz (Teacher)	jrebholz@pps.net
Open (Teacher)	
Open (Teacher)	
Sarah Lewins (Principal)	slewins@pps.net

The Rieke Foundation

The Mary Rieke School Foundation exists to provide financial support to Mary Rieke Elementary. It is affiliated with the Portland Schools Foundation, which is an independent, non-profit organization that plays a vital role in our community to provide funds for schools and advance initiatives that directly support teachers, schools and parent involvement. Historically, our Foundation has partially and fully funded a classroom teacher for class size reduction. Past foundation fundraising activities include an annual auction (March 8, 2018) and a direct-giving campaign; we are currently considering adding additional activities.

For more information on involvement opportunities contact Foundation liaison Dana Grigsby, dana@userfirstweb.com.

There are several easy ways to donate to the Rieke Foundation:

- Send a check to: All Hands Raised Foundation or
2069 NE Hoyt
Portland, OR 97232
- Call All Hands Raised 503-234-5404 or go on line nto make a credit card donation or to set up an automatic withdrawal from a bank account. <https://allhandsraised.org/donate/>

2018 BATTLE OF THE BOOKS LIST 3-5TH GRADE DIVISION

Blast-off! By Nate Ball

The Case of the Case of Mistaken Identity by Mac Barnett

Dash by Kirby Larson

The Door by the Staircase by Katherine Marsh

Ella Enchanted by Gail Carson Levine

EllRay Jakes the Recess King! by Sally Warner

Esperanza Rising by Pam Muñoz Ryan

I Survived the Eruption of Mount St. Helens, 1980 by Lauren Tarshis

Masterpiece by Elise Broach

My Life in Dog Years by Gary Paulsen

Mystery on Museum Mile by Marcia Wells

Poppy by Avi

The Red Pencil by Andrea Davis Pinkney

We the Children by Andrew Clements

Wild Life by Cynthia DeFelice

Wild Wings by Gill Lewis

August 2017

Sunday	Monday	Tuesday	Wednesday	Thursday	Friday	Saturday
		1	2	3 Last day to order School house supplies https://parent.bluschoolsupplies.com/	4	5
6	7	8	9	10	11	12
13	14	15	16	17	18	19
20	21	22	23	24	25 Teachers return	26 Community Care Clean-Up Day Playground Installation focus 9-12 pm (Volunteers needed)
27	28	29 Teacher Lunch - Packet stuffing and bulletin board set-up (Volunteers needed)	30 1 st -5 th first day of school K screenings	31 K screenings		

September 2017

Sunday	Monday	Tuesday	Wednesday	Thursday	Friday	Saturday
					1 K screenings	2
3	4 Labor Day No School	5 Kindergarten first day PTA coffee for new Kindergarten families	6	7 Back to School picnic 6-8pm "Field Dedication" 5th grade Ice Cream fund raiser (Volunteers needed)	8 Walk/Bike Day	9
10	11	12	13 Robert Gray Back to School Night	14 Rieke Back to School Night 6:30-8pm	15	16
17	18 Wilson HS Back to School Night	19 PTA meeting 6:30-8 pm	20	21	22 Rummage sale set-up 5pm-9pm (Volunteers needed)	23
24 Rummage Sale 9am-3pm (Volunteers needed)	25	26	27	28	29	30

October 2017

Sunday	Monday	Tuesday	Wednesday	Thursday	Friday	Saturday
1	2 National Custodian Appreciation Day	3	4	5	6 Fall Book fair Walk/Bike Day	7
8	9 Fall Book fair Columbus Day	10 Fall Book fair	11 Fall Book fair Multi-Cultural Night (Volunteers needed)	12 Fall Book fair	13 In Service Day No School	14
15	16	17 PTA programs overview meeting and pot-luck 6:30-8 pm	18	19	20 PTA Movie night K-2 (Volunteers needed)	21
22	23	24	25	26	27 PTA Movie night 3-5 (Volunteers needed)	28
29	30	31 Halloween				

November 2017

Sunday	Monday	Tuesday	Wednesday	Thursday	Friday	Saturday
			1	2 End of 1 st quarter	3 Teacher planning day No School	4
5	6	7	8 Parent/Teacher conferences 8am-8pm No School	9 Parent/Teacher conferences 8am-8pm No School	10 Veterans day No School	11 Veterans Day
12	13	14	15	16	17 Walk/Bike Day	18
19	20	21	22 Thanksgiving Break No School	23 Thanksgiving Break No School	24 Thanksgiving Break No School	25
26	27	28	29	30		

December 2017

Sunday	Monday	Tuesday	Wednesday	Thursday	Friday	Saturday
					1 Walk/Bike Day	2
3	4	5	6	7 Writer's Tea 9-10 am	8	9
10	11	12	13	14	15 Spirit Day	16
17	18 Winter Break No School	19 Winter Break No School	20 Winter Break No School	21 Winter Break No School	22 Winter Break No School	23
24	25 Winter Break No School Christmas	26 Winter Break No School	27 Winter Break No School	28 Winter Break No School	29 Winter Break No School	30
31						

January 2018

Sunday	Monday	Tuesday	Wednesday	Thursday	Friday	Saturday
	1 New Year's Day No School	2	3	4	5 Walk/Bike Day	6
7	8	9	10	11	12	13
14	15 MLK Holiday No School	16 PTA meeting 6:30-8pm	17	18	19 PTA Movie night K-2 (Volunteers needed)	20
21	22	23	24	25	26 End of 2 nd quarter	27
28	29 Teacher Planning Day No School	30	31			

February 2018

Sunday	Monday	Tuesday	Wednesday	Thursday	Friday	Saturday
				1	2 PTA Movie night 3-5 (Volunteers needed) Walk/Bike Day	3
4	5	6	7	8 Connect to Kindergarten 6:30-8pm	9	10
11	12	13	14 Valentine's Day	15 Science Fair 6-8pm (Volunteers needed)	16	17
18	19 President's Day No School	20 PTA meeting 6:30-8pm Potluck dinner	21	22	23	24
25	26	27	28			

March 2018

Sunday	Monday	Tuesday	Wednesday	Thursday	Friday	Saturday
				1	2 Walk/Bike Day	3 Rieke Auction At MJCC (Volunteers needed)
4	5	6	7	8 Writer's Tea 9-10 am	9	10
11	12	13	14 Lost and found clearance day	15	16	17
18	19	20 PTA meeting 6:30-8pm	21	22 Family Fitness Night 6:30-8 pm	23	24
25	26 Spring Break No School	27 Spring Break No School	28 Spring Break No School	29 Spring Break No School	30 Spring Break No School	31

April 2018

Sunday	Monday	Tuesday	Wednesday	Thursday	Friday	Saturday
1	2	3	4	5	6 Walk/Bike Day	7
8	9	10	11	12 End of 3 rd quarter	13 Teacher Planning Day No School	14
15	16	17 PTA meeting 6:30-8pm	18	19	20	21 Earth Day
22	23 Run for Rieke 1:30-2:30	24 Run for Rieke Rain Date 1:30-2:30	25	26	27	28
29	30					

May 2018

Sunday	Monday	Tuesday	Wednesday	Thursday	Friday	Saturday
	May is Walk and Bike Challenge month	1	2	3	4	5 Rieke Plant Sale Pick-up
6 Rummage and Student Art Sale 9am-3pm	7 Teacher appreciation week	8 Teacher appreciation week Teacher Lunch (Volunteers Needed)	9 Teacher appreciation week	10 Teacher appreciation week	11 Teacher appreciation week PTA Movie Night K-2 (Volunteers needed)	12
13 Mother's Day	14	15 PTA meeting 6:30-8pm Pot luck dinner	16	17	18 PTA Movie Night 3-5 (Volunteers needed)	19
20	21	22	23	24	25	26
27	28 Memorial Day No School	29 Book fair	30 Book fair	31 Book fair 4 th and 5 th grade talent show		

June 2018

Sunday	Monday	Tuesday	Wednesday	Thursday	Friday	Saturday
					1 Book fair Walk/Bike Day Rieke Carnival 6-8pm (Volunteers needed)	2
3	4	5	6 Field Day	7 Fall 5 th Grade party at SWCC Art portfolio Night	8 5 th gr Promotion and Clap Out Last day students K-5	9
10	11 Teacher Planning Day	12 Teacher Planning Day	13	14	15	16
17 Father's Day	18	19	20	21	22	23
24	25	26	27	28	29	30